


| | | | | | | | | | |
|----|------|------|------|------|------|------|------|------|-------|
| m | 14,3 | 16 | 20 | 24 | 28 | 32 | 36 | 40 | 44,75 |
| kg | 4000 | 3480 | 2650 | 2130 | 1770 | 1505 | 1305 | 1150 | 1000 |



 Wyposażenie seryjne

4 prędkości (biegi) podnoszenia sterowane płynnie falownikiem, 3 prędkości obrotu i wzdłużenia sterowane falownikiem, ocynkowana konstrukcja i naciągi, balast, unoszony wysięgnik, wózek z silnikiem i wyłącznikiem krańcowym umieszczonym u podstawy wieży, możliwość pracy ze skróconym wysięgnikiem, wbudowane sterowanie radiowe, przycisk awaryjny, osłona chroniąca łożysko oporowe i mechanizmy, przygotowanie do samobalastowania, skrzynka elektryczna ze stali nierdzewnej, dokumentacja zgodna z normami EWG

 DOTAZIONE DI SERIE

Sollevamento "overdrive" a quattro velocità con inverter, rotazione e carrello a tre velocità con inverter, zincatura della struttura e dei tiranti, contrappeso, braccio impennabile, carrello rampante con motore e finecorsa alla base della torre, funzionamento con braccio ripiegato, comando a pulsantiera via cavo, carter di protezione per ralla e meccanismi, predisposizione per autozavorramento e radiocomando, armadio elettrico in acciaio inox, documentazione a norme CEE.

 STANDARD FEATURES


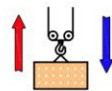
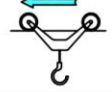
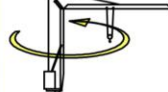




4-speed lifting, 3-speed rotation and trolley with inverter control, galvanised structure, counterweight, pull-up jib, translation trolley with motor and limit switch at base of gantry, operation with folden jib, cable-operated pushbutton remote control, guard for slewing ring and mechanisms, designed to allow installation of self-ballasting device and radio control, stainless steel electrical cabinet, documentation in accordance with EU standards.

 EQUIPEMENT DE SERIE

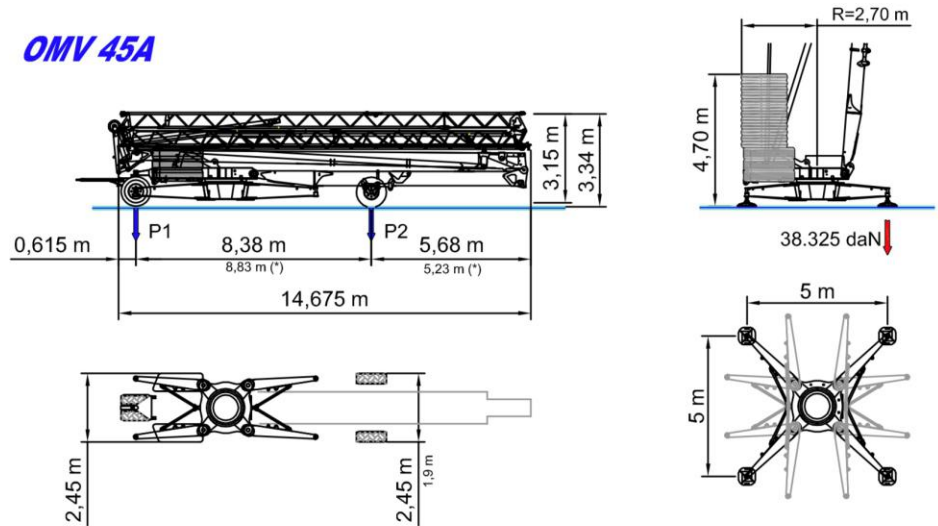
Levage à quatre vitesses, chariot et rotation à trois vitesses à contrôle électronique, galvanisation de la structure et des tirants, contrepois, flèche relevable, moteur de chariot et fin de course à la base de la tour, fonctionnement bras replié, commande par câble, carter de protection pour la couronne et les mécanismes, predisposition pour autolestage et commande radio, armoire électrique en acier inox, documentation conforme aux normes CEE.

 SERIENAUSSTATTUNG

Heben mit vier Geschwindigkeiten, Laufkatze und Rotation mit drei Geschwindigkeiten, Strukturverzinkung, Gegengewicht, hochklappbarer Arm, aufsteigender Wagen mit Motor und Anschlag an der Basis des Turms, Funktionieren mit eingeklapptem Arm, Steuerung mit Druckknopftaste via Kabel, Schutzvorrichtungen für Drehverbindungen und Mechanismen, Vorbereitung für Selbstballasteinahme und Funksteuerung, elektrischer Schrank aus rostfreiem Stahl, Dokumentation gemäß EC Vorschriften.

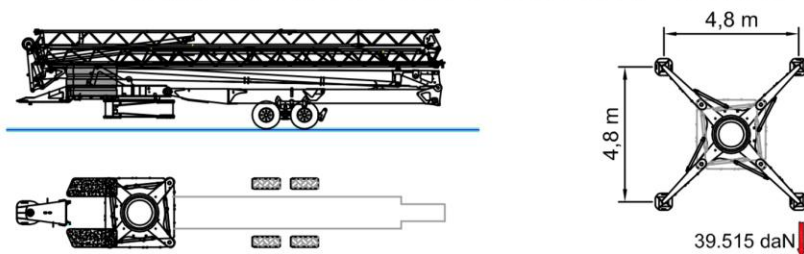
| | | | | | | |
|---|------------------------|------------------------|---|------------------------|---|----------------------------|
|  | 400V (±10%) 50 Hz | | 18kVA | | | |
|  | m/l' | 6,3 | 21 | 31 | 48 | |
| | kg | 4000 | 4000 | 1400 | 1400 | |
| | | 15 (Inverter) | | | | |
|  | m/l' | 17,8 | 28,6 | 53,5 (↗39,3) | | |
| | kW | 3 (Inverter) | | | | |
|  | n/l' | 0,13 | 0,29 | 0,58 | | |
| | kW | 3,7 (Inverter) | | | | |
|  | min | 10 |  | 21740 kg |  | 8.100 kg + 23.400 kg |
| | | kW 3 | | | | |
|  | 8100 kg | 5400 kg | 2700 kg | 0 kg | | |
| P1 | 13565 kg 14399 kg * | 11363 kg 12171 kg * | 9160 kg 9943 kg * | 6957 kg 7715 kg * | | |
| P2 | 16275 kg 15441 kg * | 15777 kg 14969 kg * | 15280 kg 14497 kg * | 14783 kg 14025 kg * | | |

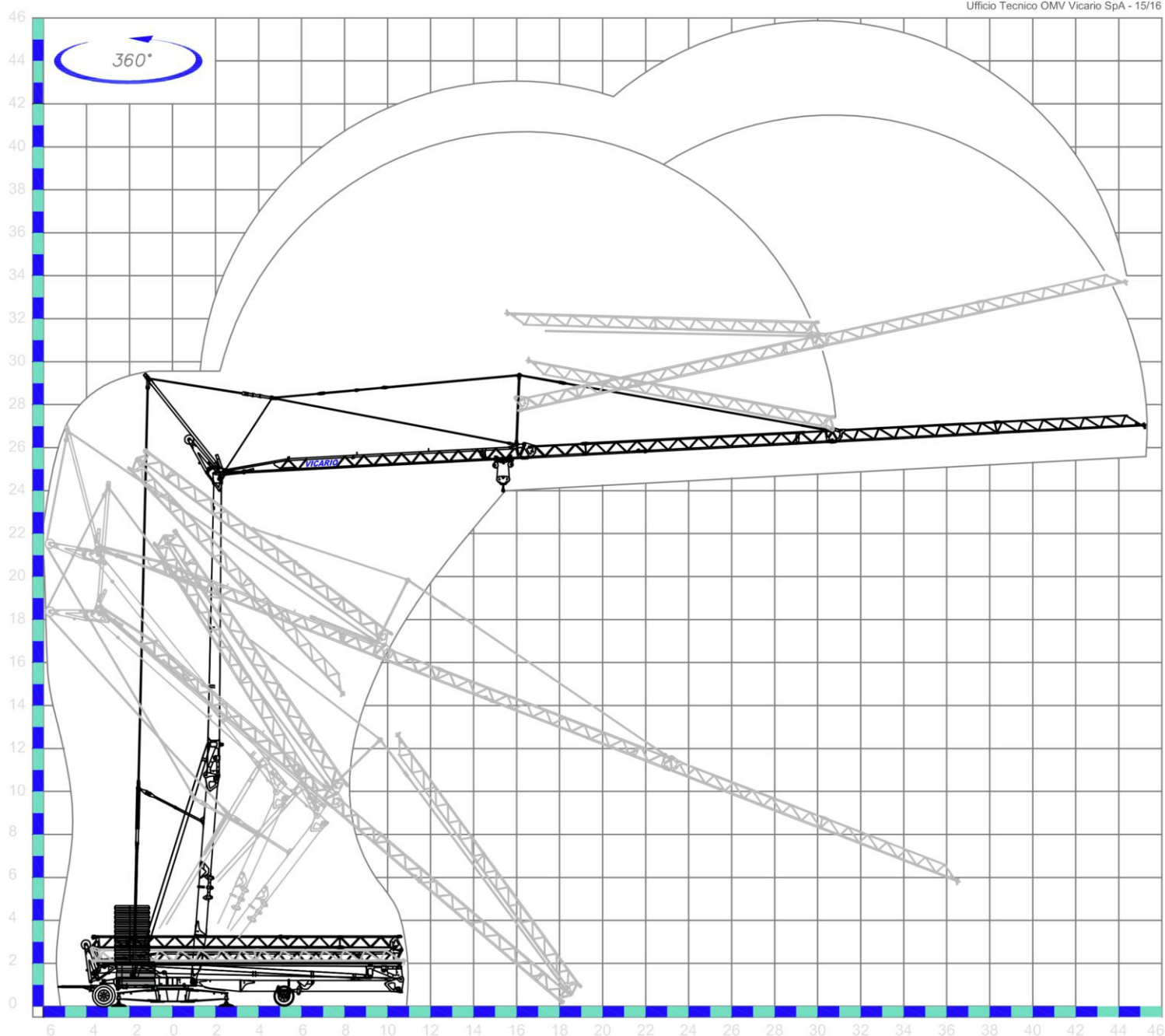
OMV 45A



OMV 45B

Variente a richiesta del cliente. Variation on request. Variation sur demande. Variation auf Anfrange. Variacion bajo petición.





International Machinery Stock

ul. Rogowska 9
54 -440 Wrocław
tel. +48 71 715 61 03
e-mail: biuro@ims24.pl
www: ims24.pl

Pieczętka: